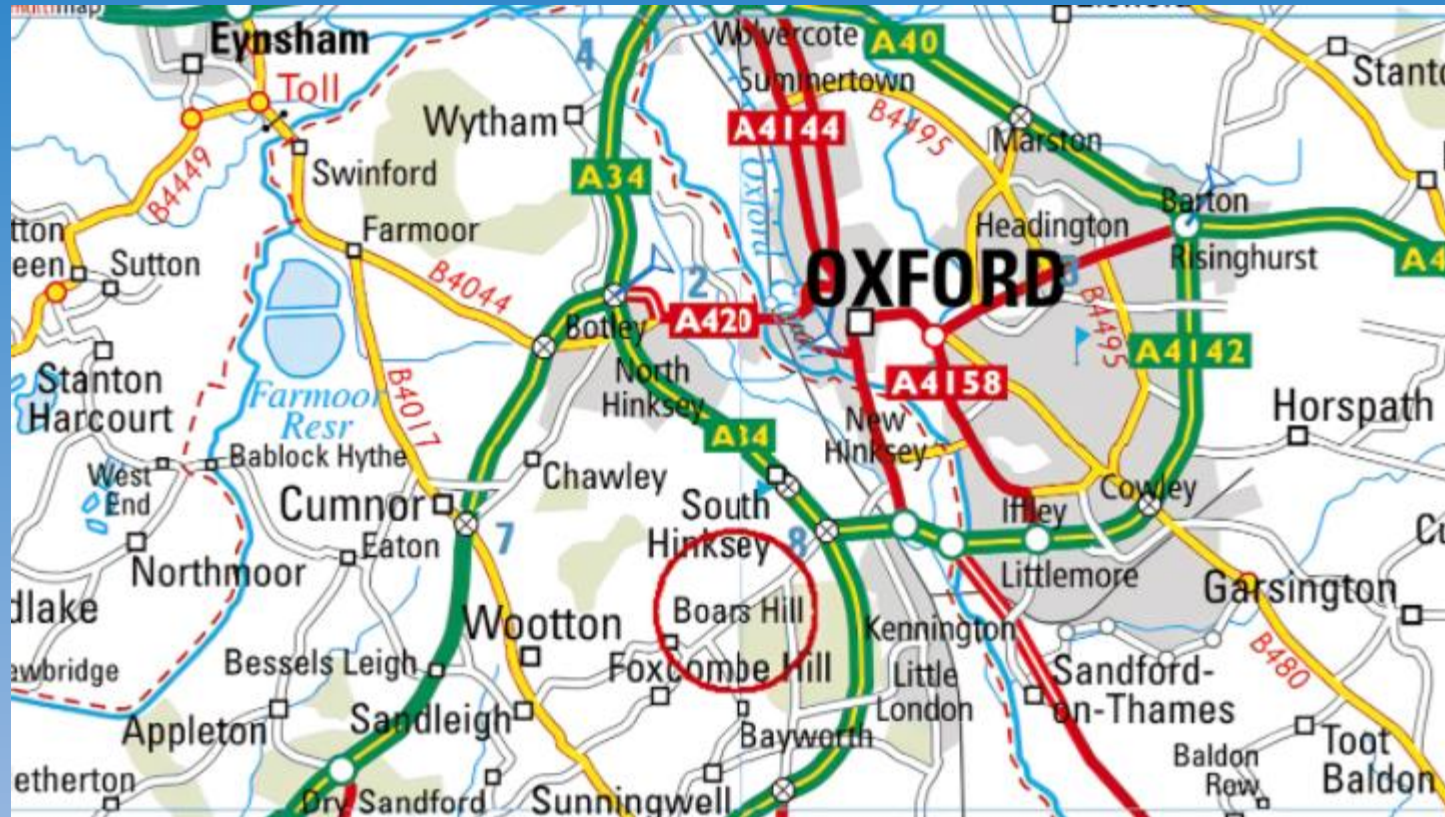


YOULBURY
Tuesday May 3rd
2022

Where are we going?



Why are we going?

...to have fun!

...to spend
time with
our friends.

..to learn skills
in
independence
and personal
responsibility.



...to build
confidence.

...to learn how
to work well as
part of a team.

...to try
something
new.

The visit starts with briefings on safety such as evacuation procedures.

All activities start with a safety briefing.

Safety First



Youlbury is accredited with
AALA
LOtC
And Adventure
Mark
All centre staff
hold the
relevant
qualifications.

All of the
activities at the
centre are
subject to
thorough risk
assessments and
these are
available to view
on the centre
website.

Christopher Rawlins Staff

Staff going on the trip

Mrs. MacLean

Ms. Sambrook

Mrs. Hoetmer

Mr. Green

Mrs. Hall

Mrs. Carr

Mrs. Humphries

Accommodation



Bear's Den

Bear's Den

Bear's Den is a bright, modern and spacious lodge set on the edge of the Top Field at Youlbury, with access to unload directly into the building from Gate 3.

The lodge sleeps 50 with two single rooms, four twin rooms, one four-bed room, and six six-bed rooms. Every room has an en-suite with toilet, sink and shower. One of the double rooms is accessible, with an accessible wet room.



Centenary Lodge

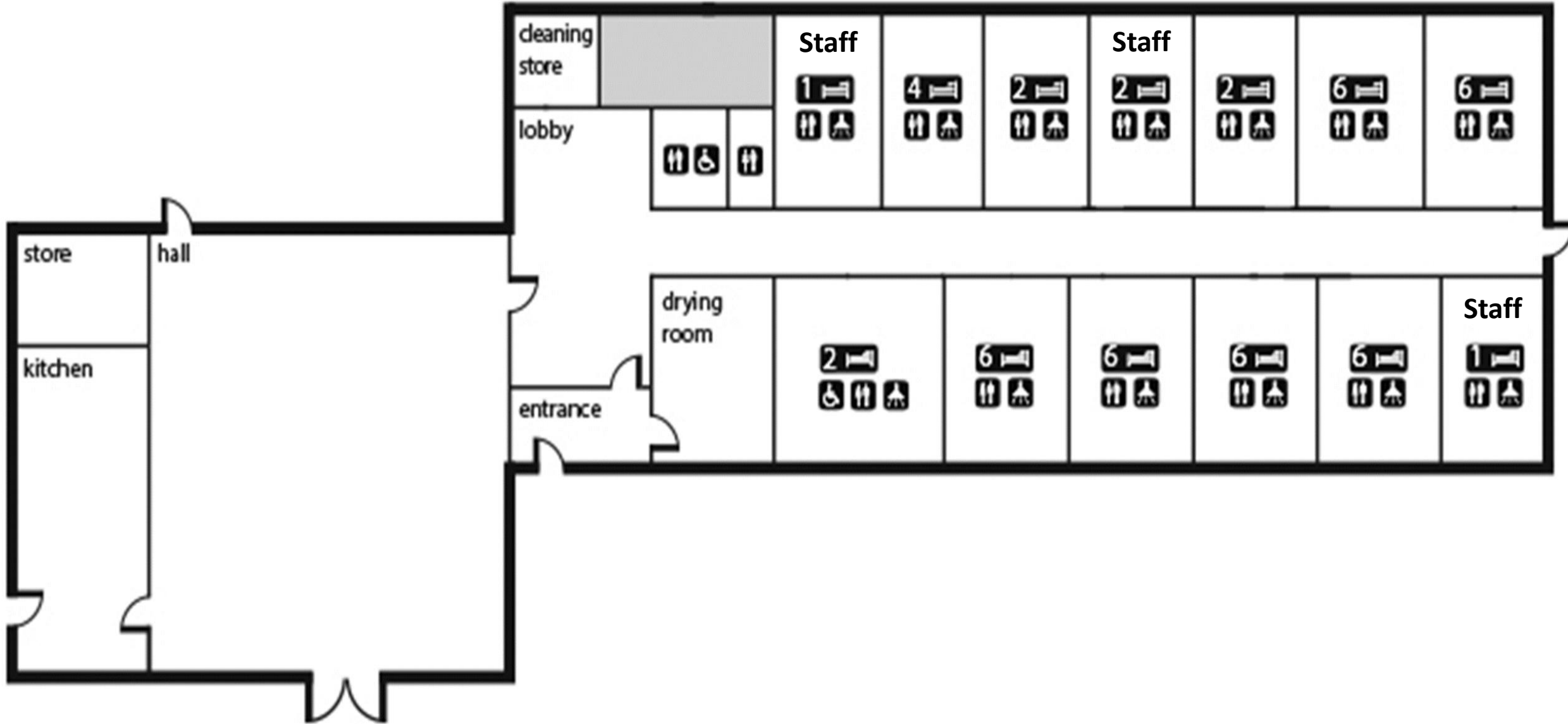






Bear's Den

Sleeps 50 (6 rooms of 6, 4 twin rooms, 1 room of 4 and 2 single rooms)



What will our day look like?

Day One

10am Arrive at the site

11am - Start activities - these will be in groups of 12

12.30 -Lunch altogether

1.30pm Activities plus snack break

4 pm - Settle into accommodation

5.30pm - Evening Meal

6.30pm - After dinner activities followed by film and hot chocolate

SLEEP!!!

Day Two

8am -Breakfast and pack

9am- Activities

12 noon- Lunch

Load coach and return to school

Activities

Crate Stacking

Team Building

Wide Games

Orienteering

Weather permitting a game of rounders!

A film for the evening

Meals

Children will need to bring a packed lunch for the first day.

We will provide snacks for the children.

For the evening meal the children will have a choice of sausage and chips or fishcake and chips. We will provide salad to accompany this and a dessert.

Fruit will be available throughout the stay.

Hot chocolate with our film.

Breakfast will be cereal and toast.

Lunch the next day will be a packed lunch provided by us.

We will accommodate all dietary requirements.

Please don't worry if your child is a fussy eater, we will ensure they don't go hungry!

What do the children need to bring?

- Kit List Provided
 - All belongings to be clearly labelled
- Medication including inhalers to be in labelled envelope and handed to Ms Sambrook on the morning

Timings on the day

8.40am Children to leave bags at the school gate and come in through the front door to the hall before going to class to be registered. Please say goodbye to your child at this point.

9am Coach will leave.

Arrive at the site at approximately 10am.

We will communicate with you to let you know we have arrived safely.

We will leave the site after lunch at 1.45pm.

We aim to be back in time for usual pick up time.

Please pick up your child from their classroom as usual.

Please ensure you have taken a
medical form and kit list.

Please ensure we have the correct
contact information for both the day
and night time.

Finally.....

Please enjoy your quiet
night!

Questions